

# Clemans Checks 'Em With Radar

AS SHOWN in the pictures on this page, Clemans Truck Line now checks the speed of its own and other trucks by radar.

The radar equipment is mounted in the company's safety car and operates along the firm's route between Grand Rapids, Michigan, and Louisville, Kentucky, by way of Indianapolis.

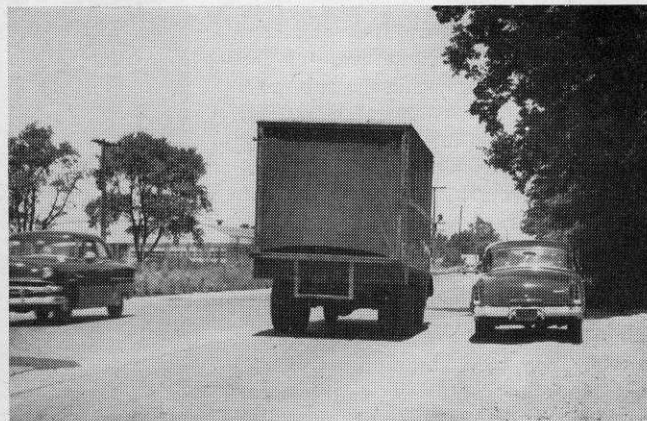


The equipment records on a dial the speed with which a vehicle breaks the radar beam from a maximum distance of 250 feet. The operator of the equipment can make this observation while seated at the wheel of his car, as shown in upper left photo.

Arthur Clemans said the unit was purchased with the idea of helping build public relations for the industry and to render assistance in the ATA road check program now in progress.

Ellsworth Butts, safety director for Clemans, said the equipment costs around \$700 and is easy to install. According to Mr. Butts, the unit does a very effective job of telling whether a vehicle is being driven within the speed limits. The speed registering apparatus is so light in weight that it can be carried like a portable radio.

Photo at top right shows Clemans safety car checking one of that line's own trucks on South Holt Road in Indianapolis with the inconspicuous radar unit, while representatives of "The Fifth Wheel" stand by with camera.



Lower photo shows how the beam-sending unit of the radar set fits into the trunk of the car. It also can be operated from the baggage ledge of the car, or can be taken outside the vehicle. Electrical connection is direct to the car battery, or the unit may be plugged into cigaret-lighter aperture.



---

One danger in a democracy is when people aren't sure what they want, they vote for something different from what they have.